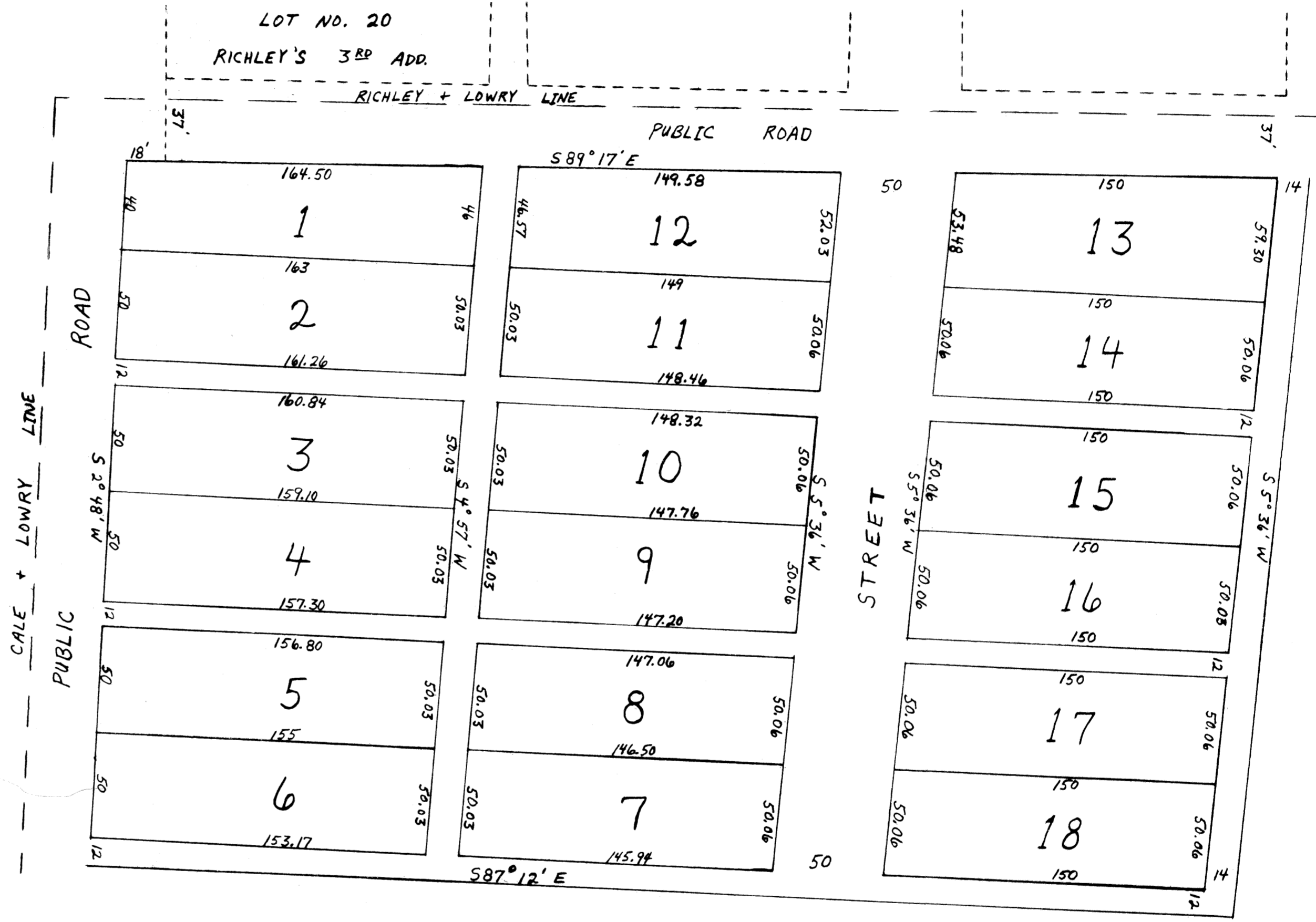


W. P. LOWRY'S

ADDITION TO LORE CITY

LOT NO. 20
RICHLEY'S 3RD ADD.

N
S
SCALE 50'=1"
VARIATION PLAT
3° 35' W
12-31-1900

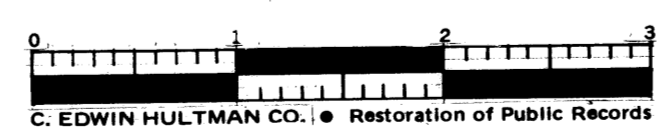


W. P. LOWRY'S ADDITION
TO
LORE CITY
GUERNSEY COUNTY

LOTS, ROADS, STREETS, AND ALLEYS, CONTAIN 4.70 ACRES. I SURVEYED THE GROUNDS DELINEATED ON THE ABOVE PLAT UNDER THE DIRECTIONS OF THE PROPRIETOR, W. P. LOWRY AND I CERTIFY THE ABOVE PLAT TO BE A TRUE REPRESENTATION OF SAID SURVEY.

(SEAL)

W.V. WEBSTER
COUNTY SURVEYOR
GUERNSEY CO. OHIO
JANUARY 2, 1901



C. EDWIN HULTMAN CO. Restoration of Public Records

ENTERED JAN. 23, 1901 AT 1:35 P.M.
RECORDED JAN. 24, 1901
J.C. CROSSEN
RECORDER